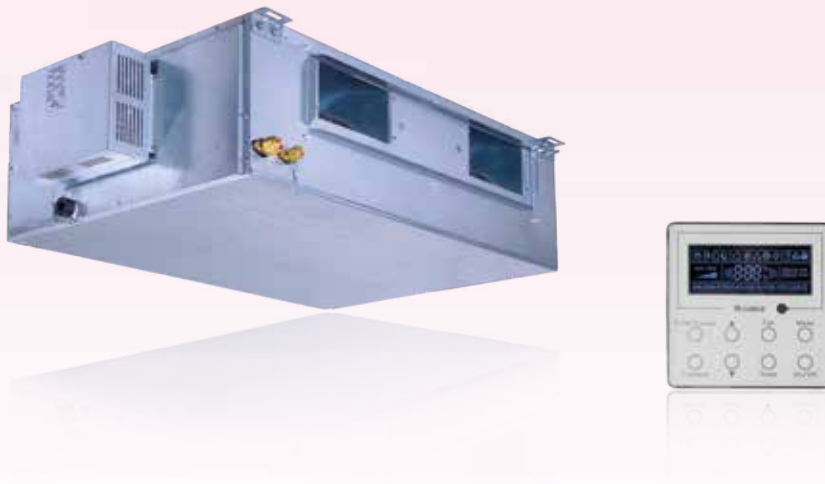


# Slim Duct



Compact and powerful, the Gree Multi+ Concealed Duct indoor units offer the ultimate in flexibility and discretion. These slim indoor units are designed to be concealed above suspended ceilings or within open closet spaces to deliver conditioned air via ducting and suitable ceiling or wall grilles. This arrangement provides immense flexibility, in terms of both the distribution of conditioned air and the type of grille or diffuser that best compliments the room's styling. Each unit comes with an easy to operate wall mounted tether controller.

## Features and Benefits:

- Medium Static Pressure Capability
- Slim Line Construction 7-7/8" high
- Flexible Return Air From Bottom Or Rear.
- Internal Condensate Drain Pump
- Sentry Float Switch
- Environmentally Safe R-410A Refrigerant

Ceiling Cassette Indoor Unit		DUCT09HP230V1AD	DUCT12HP230V1AD	DUCT18HP230V1AD	DUCT24HP230V1AD
System Type		Heat Pump			
Nominal Capacity-Cooling	Btu/h	8,533	11,946	15,359	24,232
Nominal Capacity-Heating	Btu/h	9556	13,140	18,772	27,304
Power Supply		208/230V/60hz	208/230V/60hz	208/230V/60hz	208/230V/60hz
Running Current	Amps				
Airflow- T/H/M/L	CFM	265	294	412	588
Sound Pressure Level - T/H/M/L	db (A)	37/31	39/32	41/33	42/34
External Static Pressure	WG				
Unit Dimension (WxHxD)	inches	27.5x24 x7.87	27.5x24x7.87	35.5x24x7.87	43.5x24x7.87
Package Dimension (WxHxD)	inches	35x29x12	35x29x12	44x29x12	52x29x12
Net / Gross Weight	lbs	48.5/60	51/64	60/79	68/90
Piping Connections: Gas/Suction	inches	φ3/8	φ3/8	φ1/2	φ5/8
Liquid	inches	φ1/4	φ1/4	φ1/4	φ3/8